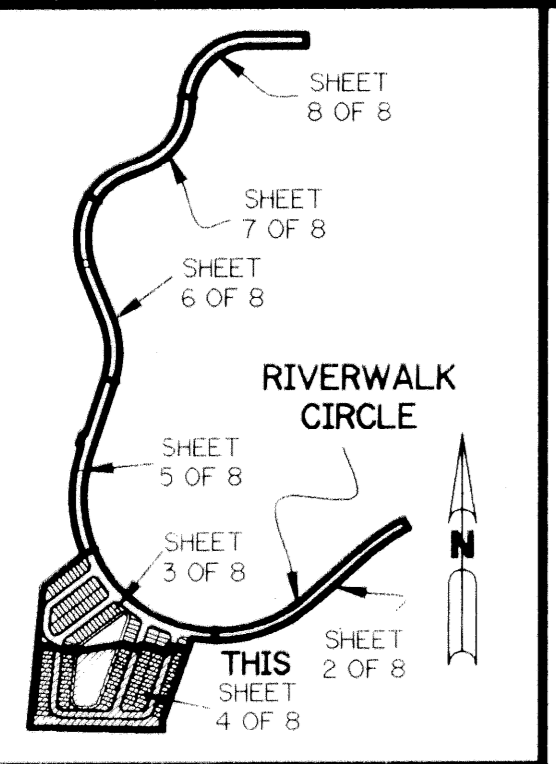


RIVERWALK - PLAT SIX

A PARCEL OF LAND LYING IN SECTION 21, TOWNSHIP 43 SOUTH, RANGE 42 EAST, CITY OF WEST PALM BEACH, PALM BEACH COUNTY, FLORIDA.

SHEET 4 OF 8 MAY, 1997



TRACT "A"
(ALSO AN INGRESS-EGRESS EASEMENT IN FAVOR OF THE NORTHERN PALM BEACH COUNTY IMPROVEMENT DISTRICT AND IN FAVOR OF THE CITY OF WEST PALM BEACH AND ALSO A PUBLIC UTILITY EASEMENT.)

TRACT "A"
(ALSO AN INGRESS-EGRESS EASEMENT IN FAVOR OF THE NORTHERN PALM BEACH COUNTY IMPROVEMENT DISTRICT AND IN FAVOR OF THE CITY OF WEST PALM BEACH AND ALSO A PUBLIC UTILITY EASEMENT.)

TRACT "L3"
WATER MANAGEMENT TRACT
(SHALL BE MAINTAINED BY RIVERWALK OF THE PALM BEACHES HOMEOWNERS ASSOCIATION, INC. WITHOUT RECOURSE TO NORTHERN PALM BEACH COUNTY IMPROVEMENT DISTRICT AND THE CITY OF WEST PALM BEACH)
3.293 ACRES

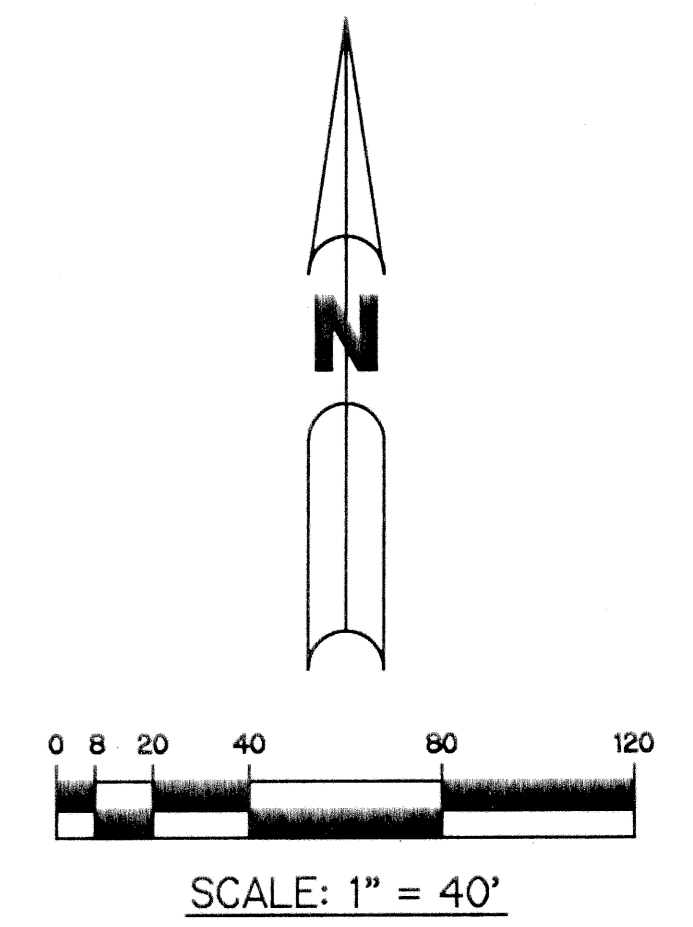
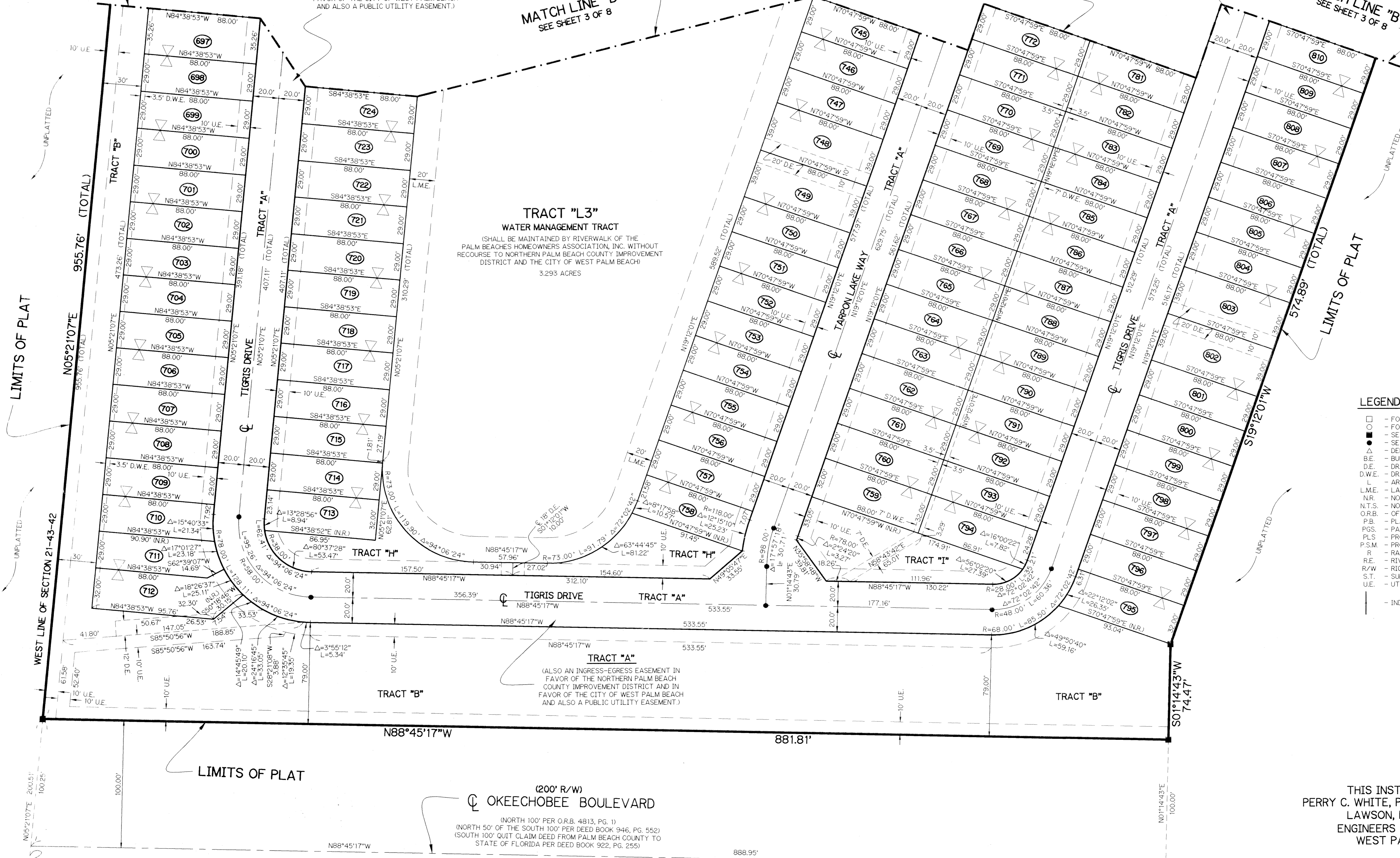
KEY MAP
NTS

MATCH LINE "B"
SEE SHEET 3 OF 8

MATCH LINE "B"
SEE SHEET 3 OF 8

MATCH LINE "B"
SEE SHEET 3 OF 8

MATCH LINE "B"
SEE SHEET 3 OF 8



- LEGEND:**
- - FOUND PERMANENT REFERENCE MONUMENT, PLS #4190
 - - FOUND PERMANENT CONTROL POINT, PLS #4190
 - - SET PERMANENT REFERENCE MONUMENT, PLS #4213
 - - SET PERMANENT CONTROL POINT, PLS #4213
 - ▲ - DELTA ANGLE
 - B.E. - BUFFER EASEMENT
 - D.E. - DRAINAGE EASEMENT
 - D.W.E. - DRAINAGE & WALL EASEMENT
 - L. - ARC LENGTH
 - L.M.E. - LAKE MAINTENANCE EASEMENT
 - N.R. - NOT RADIAL
 - N.T.S. - NOT TO SCALE
 - O.R.B. - OFFICIAL RECORD BOOK
 - P.B. - PLAT BOOK
 - P.S. - PAGES
 - P.L.S. - PROFESSIONAL LAND SURVEYOR
 - P.S.M. - PROFESSIONAL SURVEYOR AND MAPPER
 - R. - RADIUS
 - R.E. - RIVERWALK EASEMENT
 - R/W. - RIGHT-OF-WAY
 - S.T. - SURVEY TIE
 - U.E. - UTILITY EASEMENT
 - - - - - INDICATES COMMON BUILDING LINE

SUBDIVISION: RIVERWALK PLAT SIX
 BOOK: 80
 FLOOD ZONE: FLOOD MAP #
 QUAD: SE
 ZIP CODE: 33411
 PUD NAME: CITY OF WEST PALM BEACH 870

THIS INSTRUMENT PREPARED BY
 PERRY C. WHITE, P.L.S. 4213, STATE OF FLORIDA
 LAWSON, NOBLE AND WEBB, INC.
 ENGINEERS PLANNERS SURVEYORS
 WEST PALM BEACH, FLORIDA

SOUTHWEST CORNER SECTION 21-43-42
 SOUTH LINE OF SECTION 21-43-42
 N88°45'17"W

(200' R/W)
 OKEECHOBEE BOULEVARD
 (NORTH 100' PER O.R.B. 4813, PG. 1)
 (NORTH 50' OF THE SOUTH 100' PER DEED BOOK 946, PG. 552)
 (SOUTH 100' QUIT CLAIM DEED FROM PALM BEACH COUNTY TO STATE OF FLORIDA PER DEED BOOK 922, PG. 255)